

Welcome to Global Containers Management

- ◻ Your reliable partner in the global container leasing and freight forwarding industry.
- ◻ Active fleet of own and leased containers worldwide.
- ◻ Strategic partnerships in key trade hubs: Singapore, China, UAE, Vietnam, Korea, and other locations.



Who We Are

With more than **5 years of experience in the logistics** sector, we've established ourselves as a reliable partner in the container leasing industry.



Customer Success is Our Goal

We measure our success by the success of our clients. We're dedicated to understanding and meeting our clients' needs, which drives everything we do.



We Fulfill the Terms of the Agreement:

We value trust and integrity, and we pride ourselves on meeting our commitments. When we make a promise, we see it through.



Constantly Developing:

We believe in continuous learning, innovation, and improvement. We're always looking for ways to better serve our clients and grow as a company.



We Value Each Client:

Each of our clients is important to us. We value the trust they place in us and strive to exceed their expectations with exceptional service and support.



What we offer



Wide Range of Containers

>5000 containers

With our active fleet of over 5000 containers, we offer various leasing options including dry containers, refrigerated containers, and specialized containers, to cater to diverse client requirements. No matter the complexity of your logistics needs, we have the right container solution for you.



Freight Forwarding

30000 TEU per year

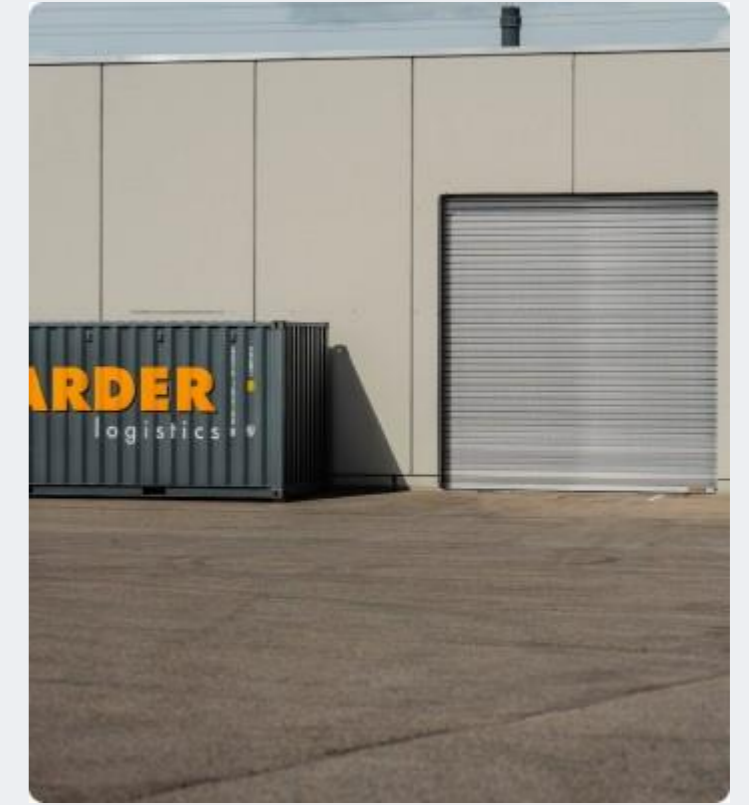
In addition to container leasing, we also offer freight forwarding services. This ensures a seamless experience for our clients by providing a one-stop solution for all your logistics needs. We handle everything from the planning to the execution of your cargo shipment.



Flexible Leasing Options

From 1 to 2000 containers

We offer flexible lease terms that can be tailored to your specific needs, whether you need a container for a short-term project or a long-term venture.



Additional services

Insurance, repair,
relocation, storage

Beyond leasing containers and freight forwarding, we also provide a suite of value-added services. This includes routine maintenance to ensure container longevity, delivery to your designated location, and tracking services for transparency and peace of mind.

Our Valued Clients and Partners

- ▣ Proud to collaborate with industry leaders like JJMES, Trawind, Topray, Go Higher, Beijing Junchi International Freight Forwarders Co, and Chengdu EFE Logistics Co. Ltd.
- ▣ How we work together to achieve mutual success.

Our Partners

 JJMES

 TRAWIND
SHIPPING
信风海运物流
TRAWIND SHIPPING LOGISTICS

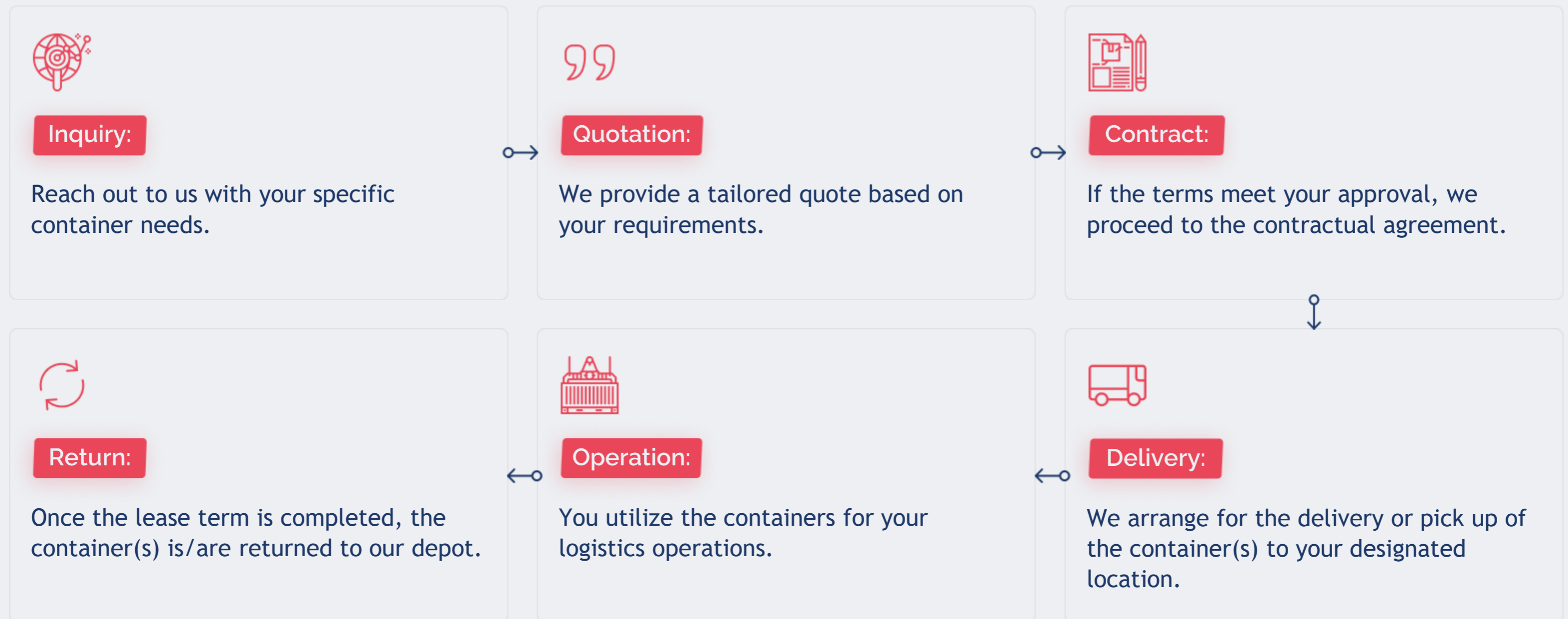
 TOPRAY
Solar
拓日新能

 EFE
LOGISTICS GROUP



Join Us in Shaping the Future of Global Trade

Leasing Process:



- ▣ We tailor solutions to individual client needs.
- ▣ Contact information for starting a lease or partnership.

Our contacts



Singapore

head
office

✓ 18 Boon Lay Way, #02-105
TradeHub 21, Singapore
609966

☎ +65 9088 4796

✉ office@gcmcargo.com



Dubai

✓ KHALIFA B A BALILA BLDG,
09-1F, Dubai

☎ +971 52 379 5007

✉ officeuae@gcmcargo.com



Vietnam

✓ 202 Dien Bien Phu
Phuong 17, Binh Thanh
Ho Chi Minh

☎ +84 385 102 385

✉ office@gcmcargo.com

